

T.B.M. "D" "X" on S.E. COR. CONC. BASE OF LIGHT POLE
STA. 213+20 (70 R). ELEV. = 591.25

CUY-90-17.58 Sheet 29

29

CUYAHOGA COUNTY
CUY - 90-17.58

COMPUTED BY: J.P.P. 4/8/68
CHECKED BY: W.R. 4/20/68

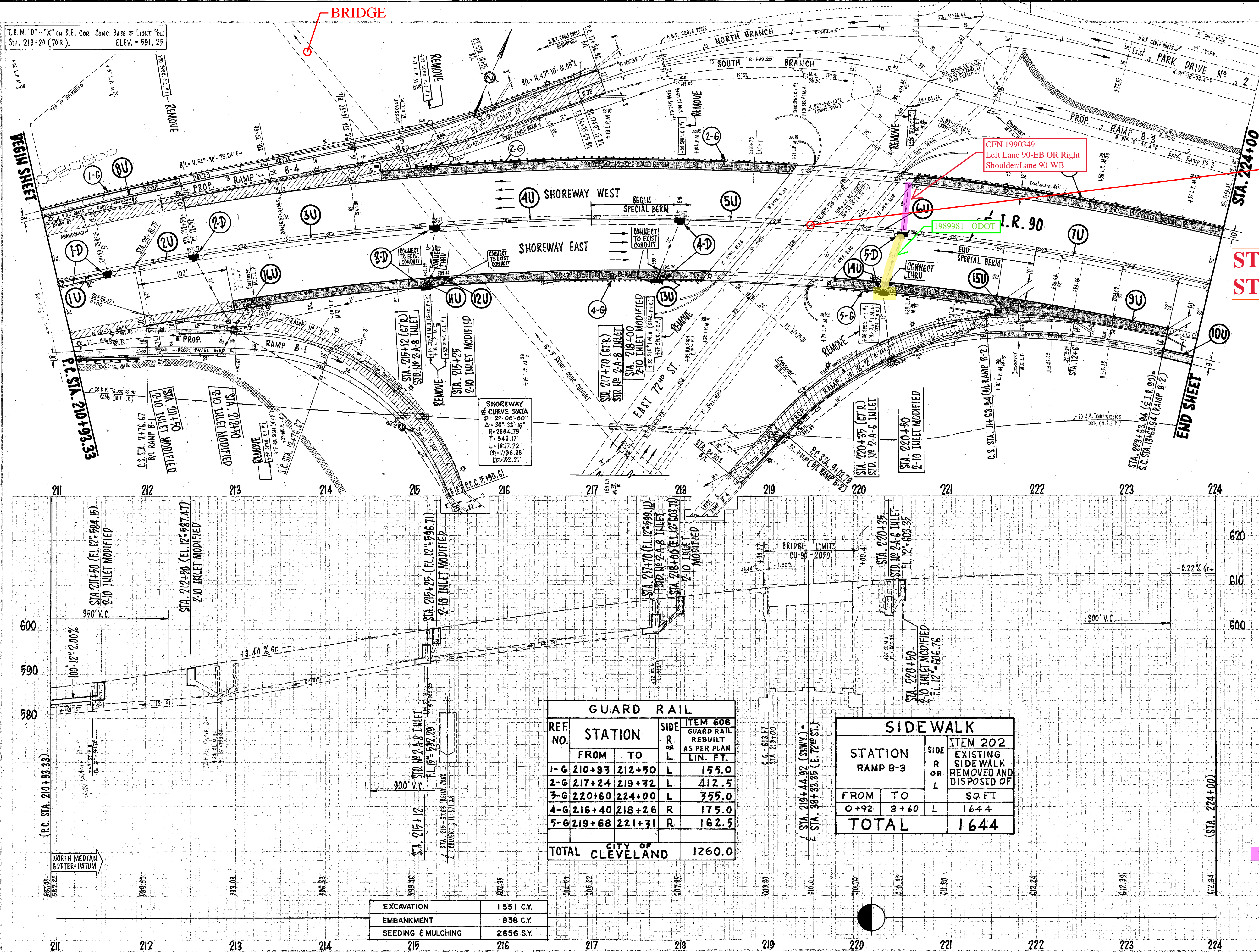
T.B.M. "E" "X" on N.E. COR. CONC. BASE OF LIGHT POLE
28/16, STA. 223+00 (70 R). ELEV. = 609.41

E. 72nd STREET
SLM 20.66 = MM 176.47

START EAST OF E72ND
STREET

STATION		ITEM 604		ITEM 603		LIN. FT.
		2-10 INLET MOD.	2-A-6 INLET	2-CONDUIT TYPE B CLASS B BEDDING	15-CONDUIT TYPE B CLASS B BEDDING	
FROM	TO	1	1	1	1	56
210+94	211+50	1	1	1	1	56
212+50	215+25	1	1	1	1	20
215+25	218+00	1	1	1	1	20
218+00	220+50	1	1	1	1	20
220+50	224+00	1	1	1	1	34
TOTALS		5	5	5	5	96

- SEE 1950 CUY-90-20.35
FOR ORIGINAL
CONSTRUCTION



GUARD RAIL				
REF. NO.	STATION		SIDE R OR L	ITEM 606 GUARD RAIL REBUILT AS PER PLAN LIN. FT.
	FROM	TO		
1-G	210+93	212+50	L	155.0
2-G	217+24	219+32	L	412.5
3-G	220+60	224+00	L	355.0
4-G	216+40	218+26	R	175.0
5-G	219+68	221+31	R	162.5
TOTAL CITY OF CLEVELAND				1260.0

SIDE WALK			
STATION RAMP B-3		SIDE R OR L	ITEM 202 EXISTING SIDE WALK REMOVED AND DISPOSED OF
FROM	TO		SQ. FT.
0+92	3+60	L	1644
TOTAL			1644

EXCAVATION	1551 C.Y.
EMBANKMENT	838 C.Y.
SEEDING & MULCHING	2656 S.Y.

PLAN & PROFILE - MEMORIAL SHOREWAY - P.C. STA. 210+93.33 to STA. 224+00

PEDESTRIAN OVERPASS

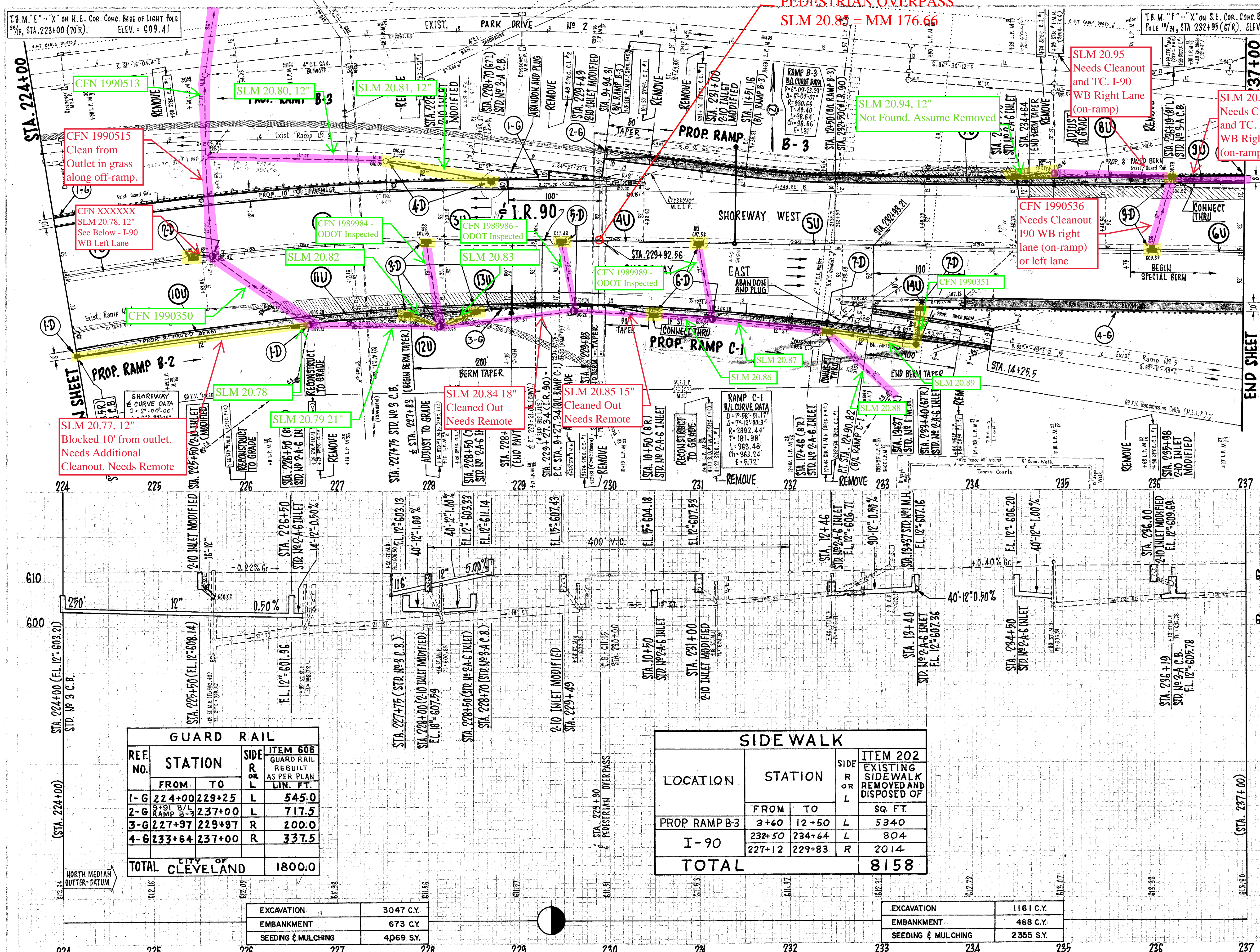
SLM 20.85 = MM 176.66

CUY-90-17.58 Sheet 30

30

CUYAHOGA COUNTY
CUY-90-17.58

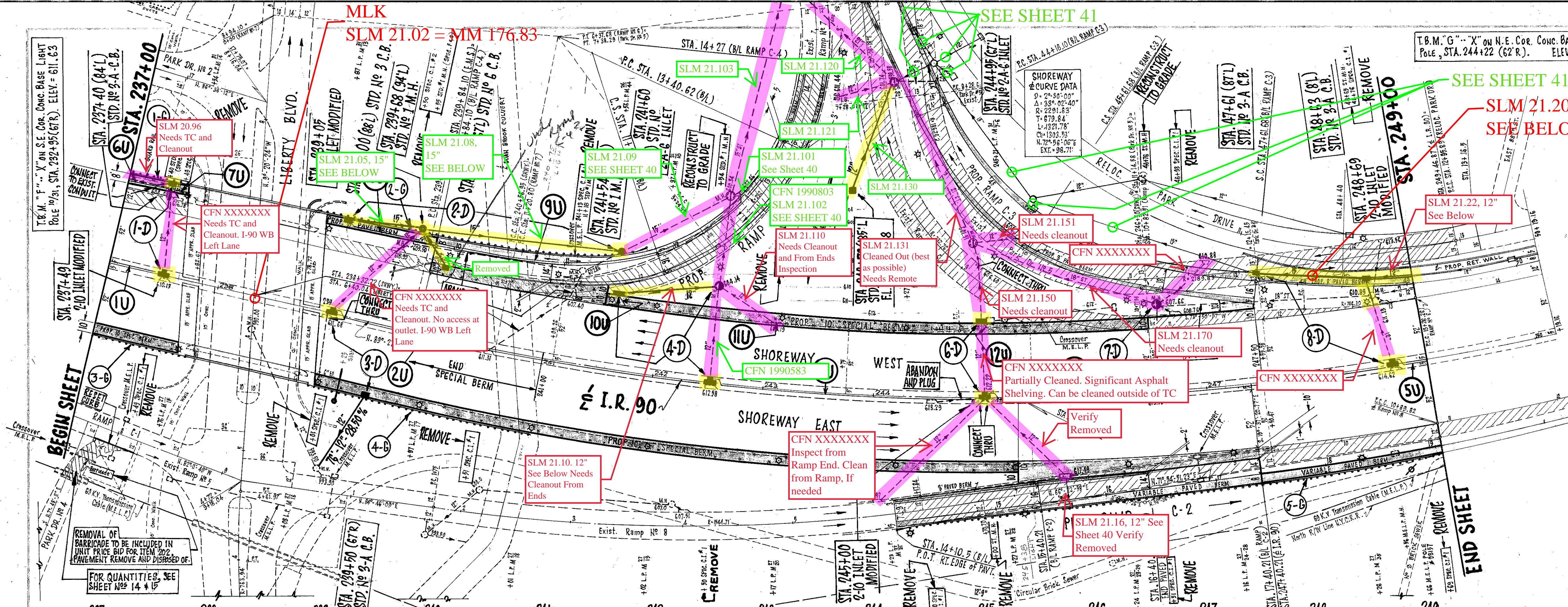
COMPUTED BY: J. D. J. 4/10/68
CHECKED BY: W. R. 4/20/68



STATION		FROM		TO		SIDE		ITEM 604		ITEM 603		LIN. FT.	
REF. NO.	ID	2-10 INLET MOD.		2-A-6 INLET		3-A INLET		STD. NO. 3		STD. NO. 3		CONDUIT TYPE C CLASS B BEDDING	
		MOD.	INLET	MOD.	INLET	MOD.	INLET	MOD.	INLET	MOD.	INLET	MOD.	INLET
	20												
	30												
	40												
	50												
	60												
	70												
	80												
	90												
TOTALS		5	6	2	2	1	3	3	76	590			

- SEE 1950 CUY-90-20.35
FOR ORIGINAL
CONSTRUCTION

PLAN & PROFILE - MEMORIAL SHOREWAY - STA. 224+00 to STA. 237+00



- SEE 1950 CUY-90-20.35
FOR ORIGINAL
CONSTRUCTION

DRAINAGE									
ITEM 604					ITEM 603				
STATION	REF. NO.	STANDARD	STANDARD	STANDARD	STANDARD	STANDARD	STANDARD	STANDARD	STANDARD
FROM	TO	SIDE	INLET	MOD.	C.B.	C.B.	C.B.	C.B.	C.B.
237+40	237+49	LT.	1						
239+00	241+54	LT.			1				
239+05	239+50	RT.							
241+60	242+50	LT.							
243+70	244+05	LT.							
244+95	245+00	LT.							
RAMP C-3	246+76	RT.							
247+6	249+00	LT.							
TOTALS			5	2	4	1	1	2	2

GUARD RAIL				
REF. NO.	STATION		SIDE	ITEM 606
	FROM	TO	R	GUARD RAIL
				REBUILT
				AS PER PLAN
				LIN. FT.
1-G	237+00	237+57	L	57.5
2-G	238+75	239+84	L	107.0
3-G	237+00	239+85	R	87.5
4-G	239+00	241+90	R	300.0
5-G	247+40	249+00	R	172.0
TOTAL CITY OF CLEVELAND				724.0

EXCAVATION	3839 C.Y.
EMBANKMENT	593 C.Y.
SEEDING & MULCHING	5210' SY.

PLAN & PROFILE - MEMORIAL SHOREWAY - STA. 237+00 to STA. 249+00

CUY-90-17.58 Sheet 31

CUYAHOGA COUNTY
CUY-90-17.58

COMPUTED BY: J.D. 4/9/68
CHECKED BY: C.R. 4/20/68

SLM 21.22, 12" SEE BELOW
Right Shoulder. Possible TC If Need Cleanout

SLM 21.24, 12" SEE BELOW
Right Shoulder. Possible TC if Need Cleanout

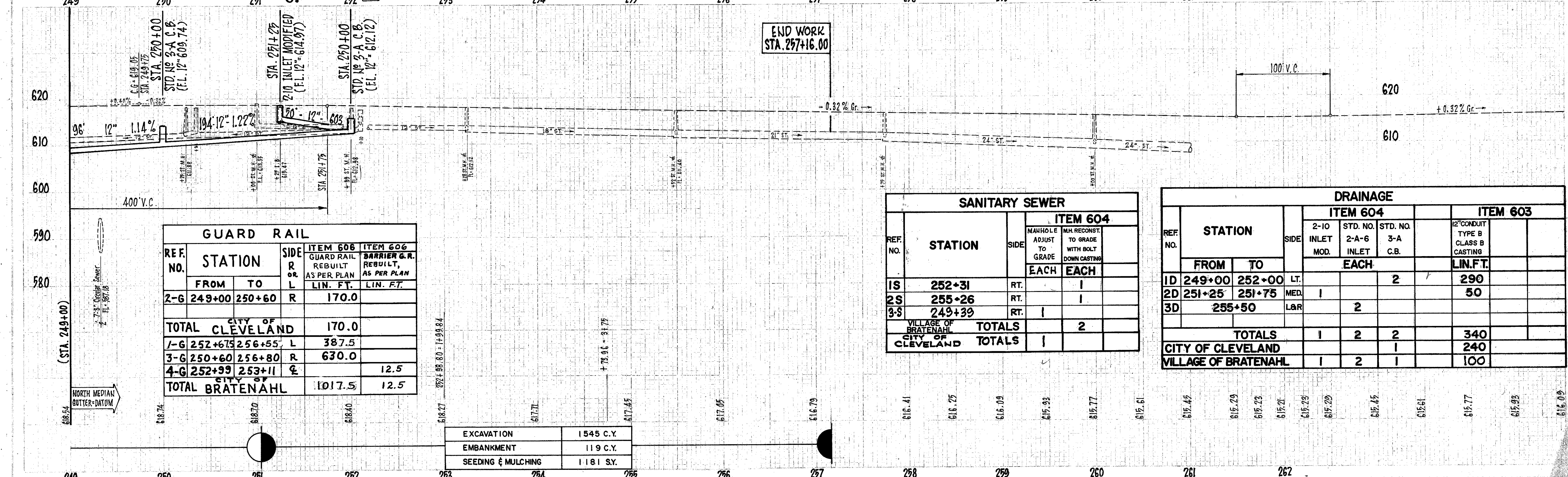
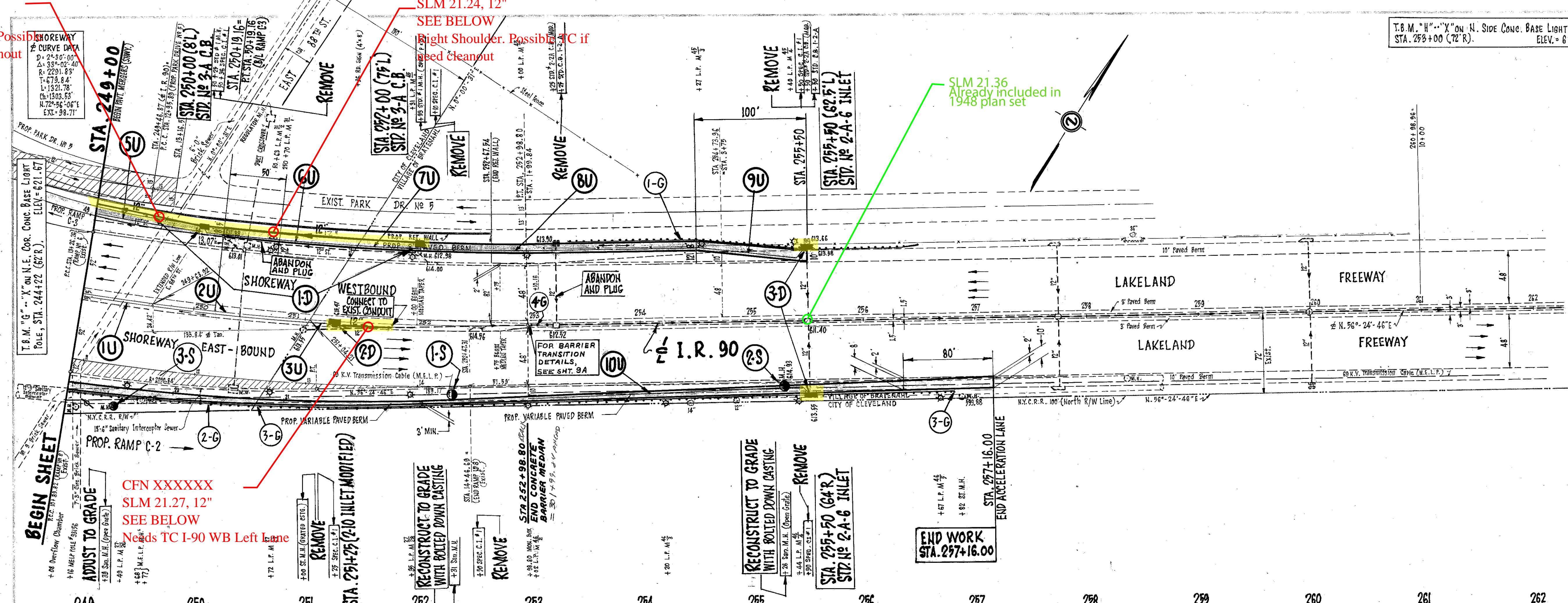
T.B.M. "H" on N.E. Cor. Conc. Base Light Pole, STA. 253+00 (72' R), ELEV. = 619.15

CUY-90-17.58 Sheet 32

32

CUYAHOGA COUNTY
CUY- 90-17.58

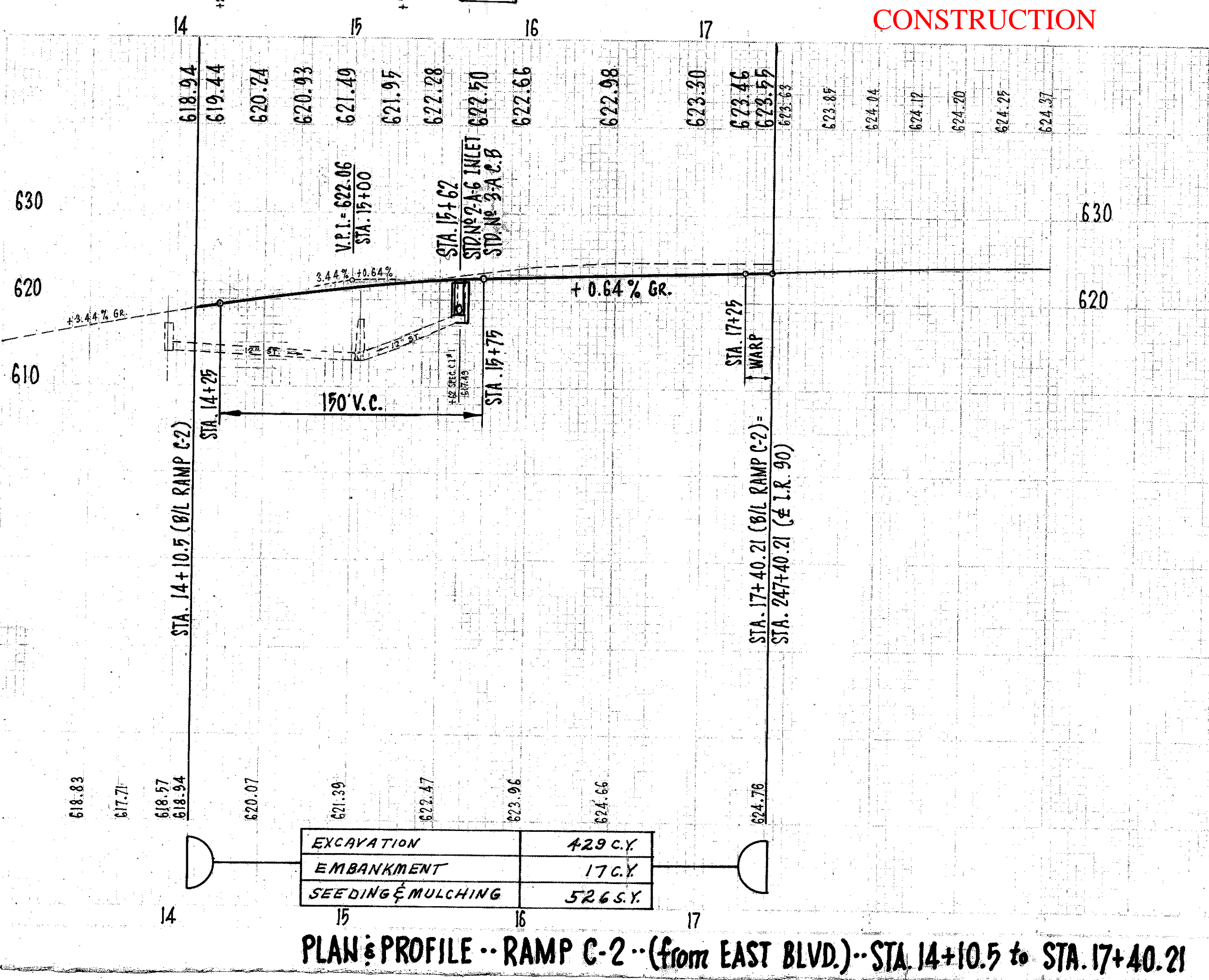
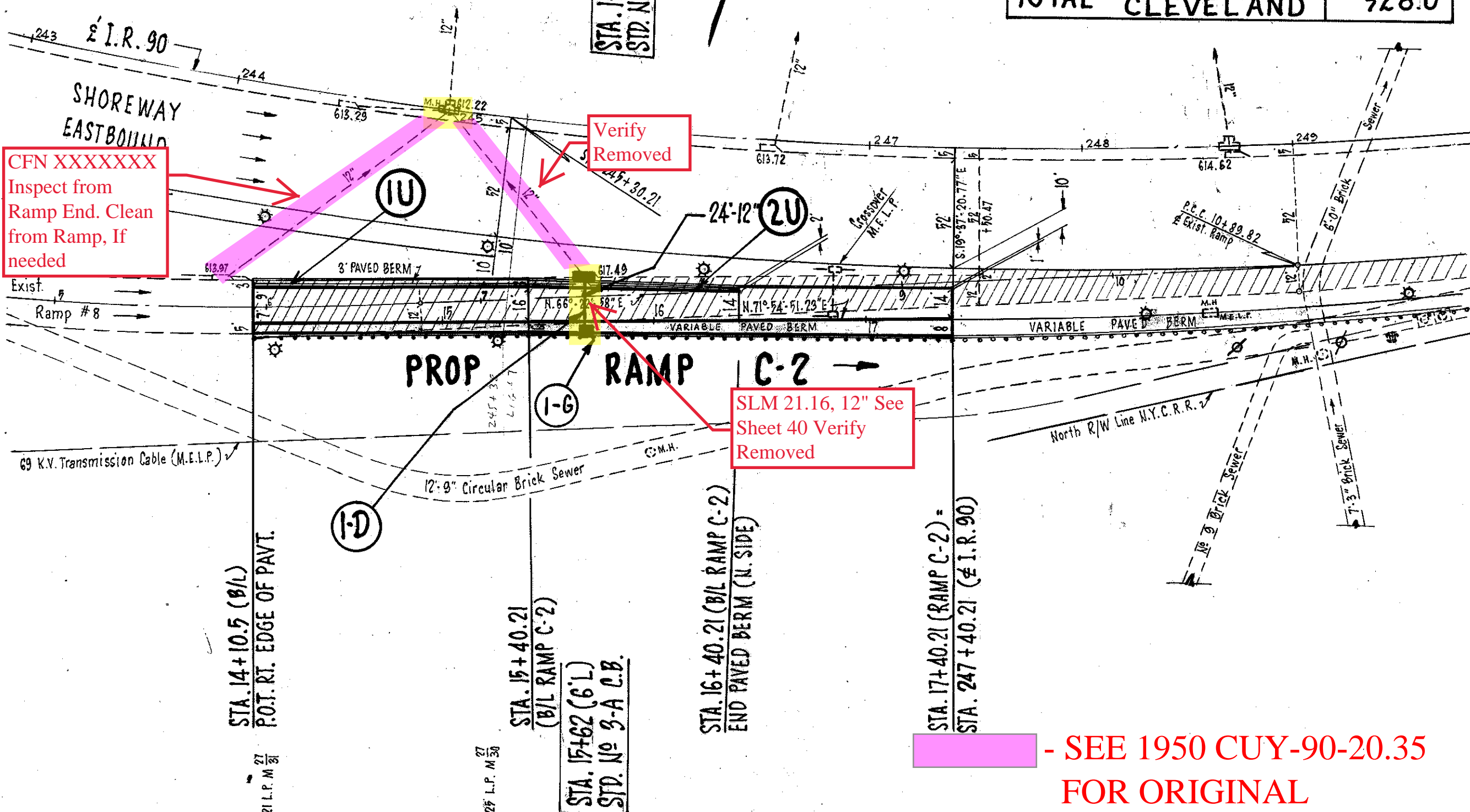
COMPUTED BY: J.D.G. 4/18/69
CHECKED BY: W.R. 4/20/69



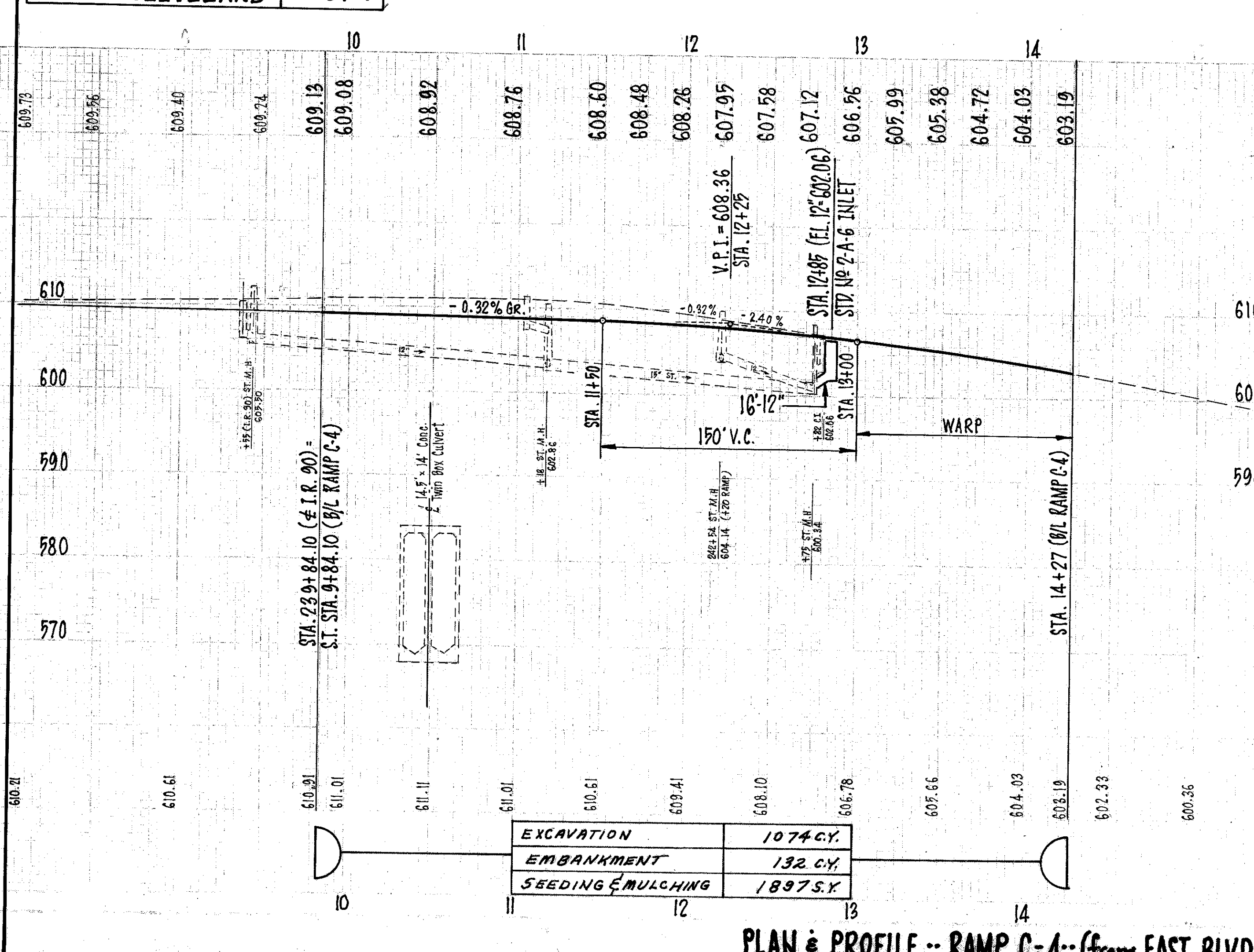
PLAN & PROFILE .. MEMORIAL SHOREWAY .. STA. 249+00 to STA. 262+00

T.B.M. "G" "X" on N.E. COR. CONC. BASE LIGHT
POLE, STA. 244+22 (62'R). ELEV. 621.67

SHOREWAY
CURVE DATA
D=2'-30'-00"
Δ=33°-02'-40"
R=291.83'
T=679.84'
L=1321.78'
Ch=1303.93'
N. 72°-56'-06"E
E=98.71'



GUARD RAIL					
REF. NO.	STATION		SIDE R OR L	ITEM 606 GUARD RAIL REBUILT AS PER PLAN	LIN. FT.
	FROM	TO			
I-G	9+84	11+77	L		193.0
TOTAL CITY OF CLEVELAND					193.0

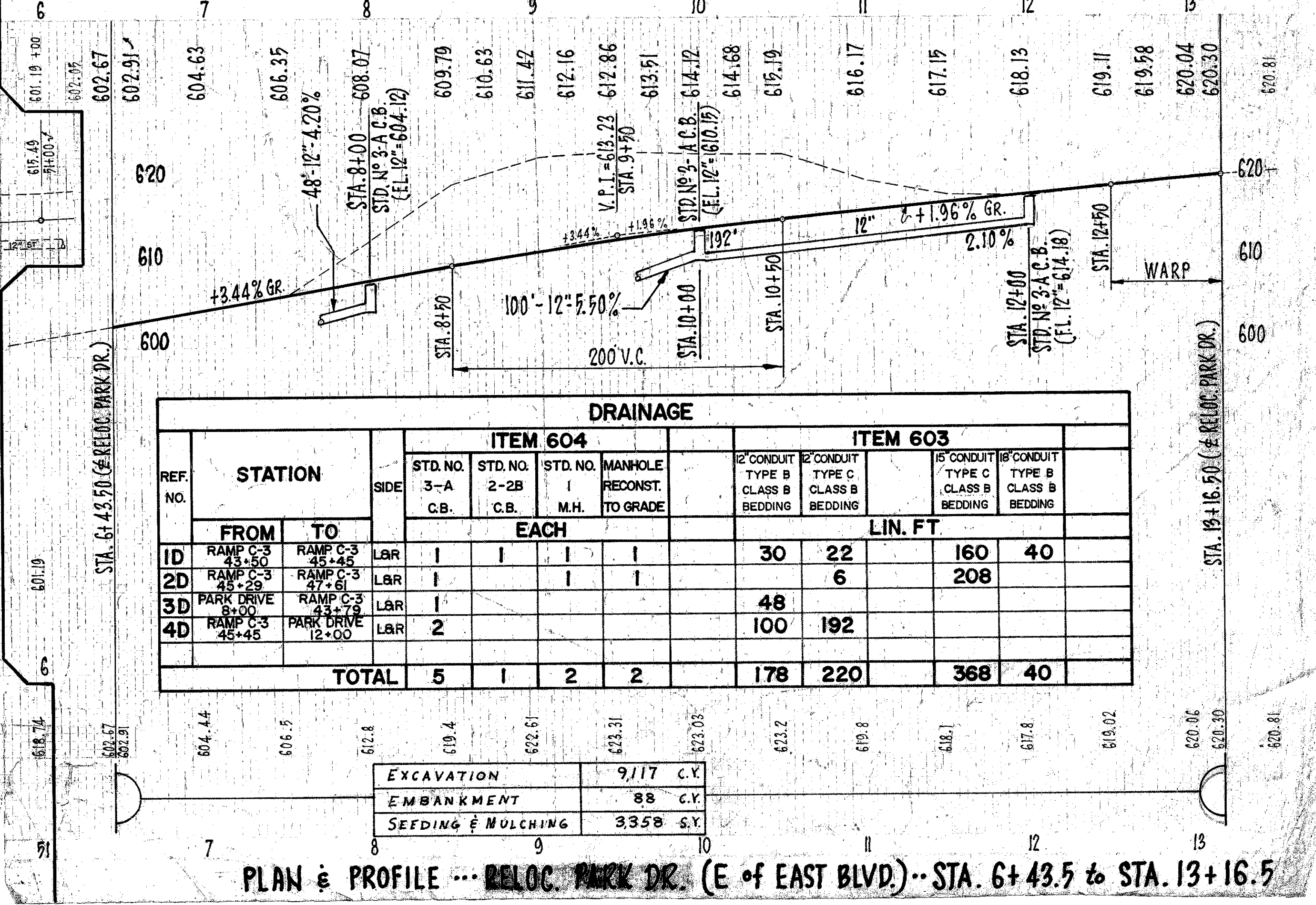
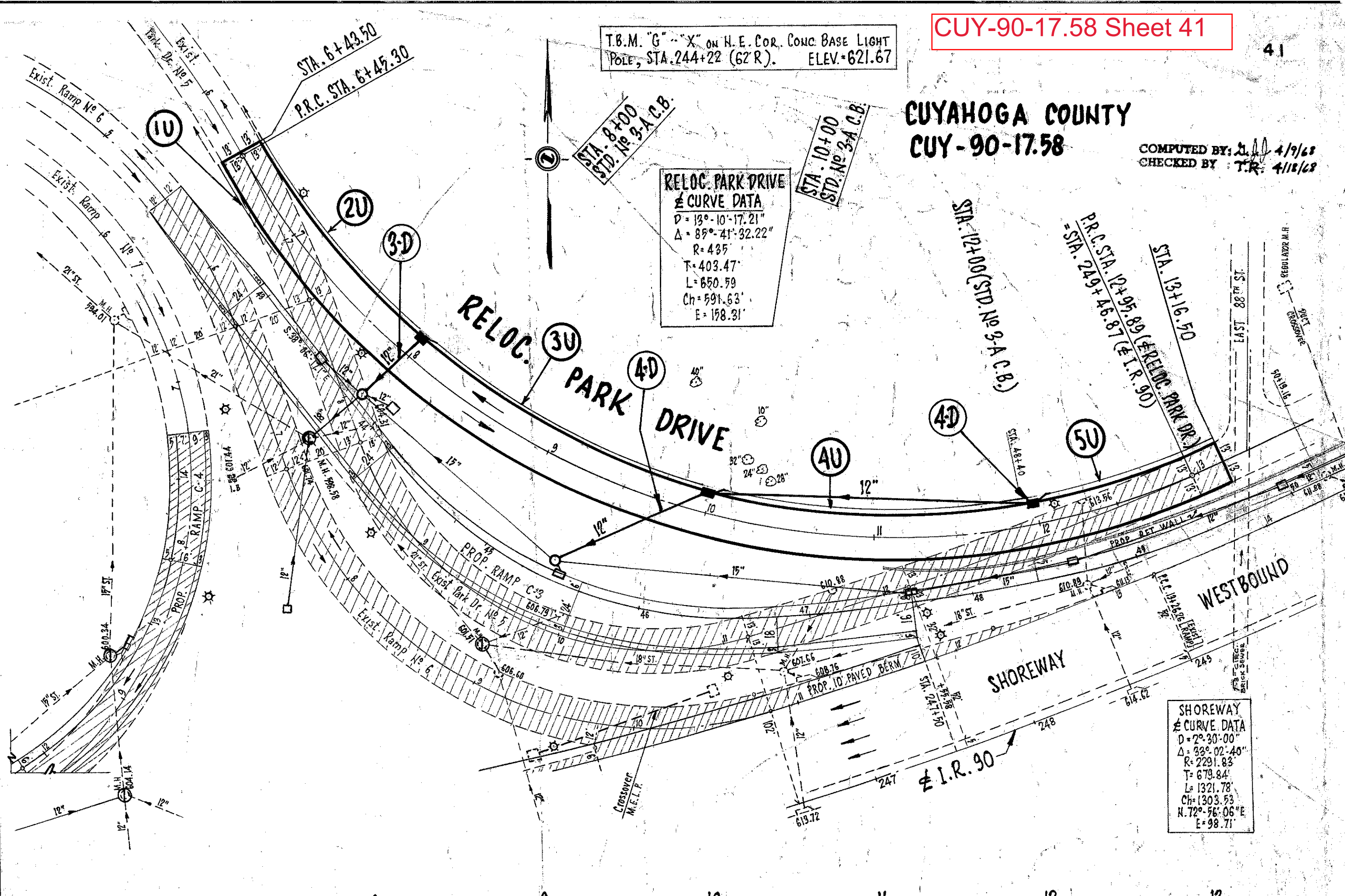
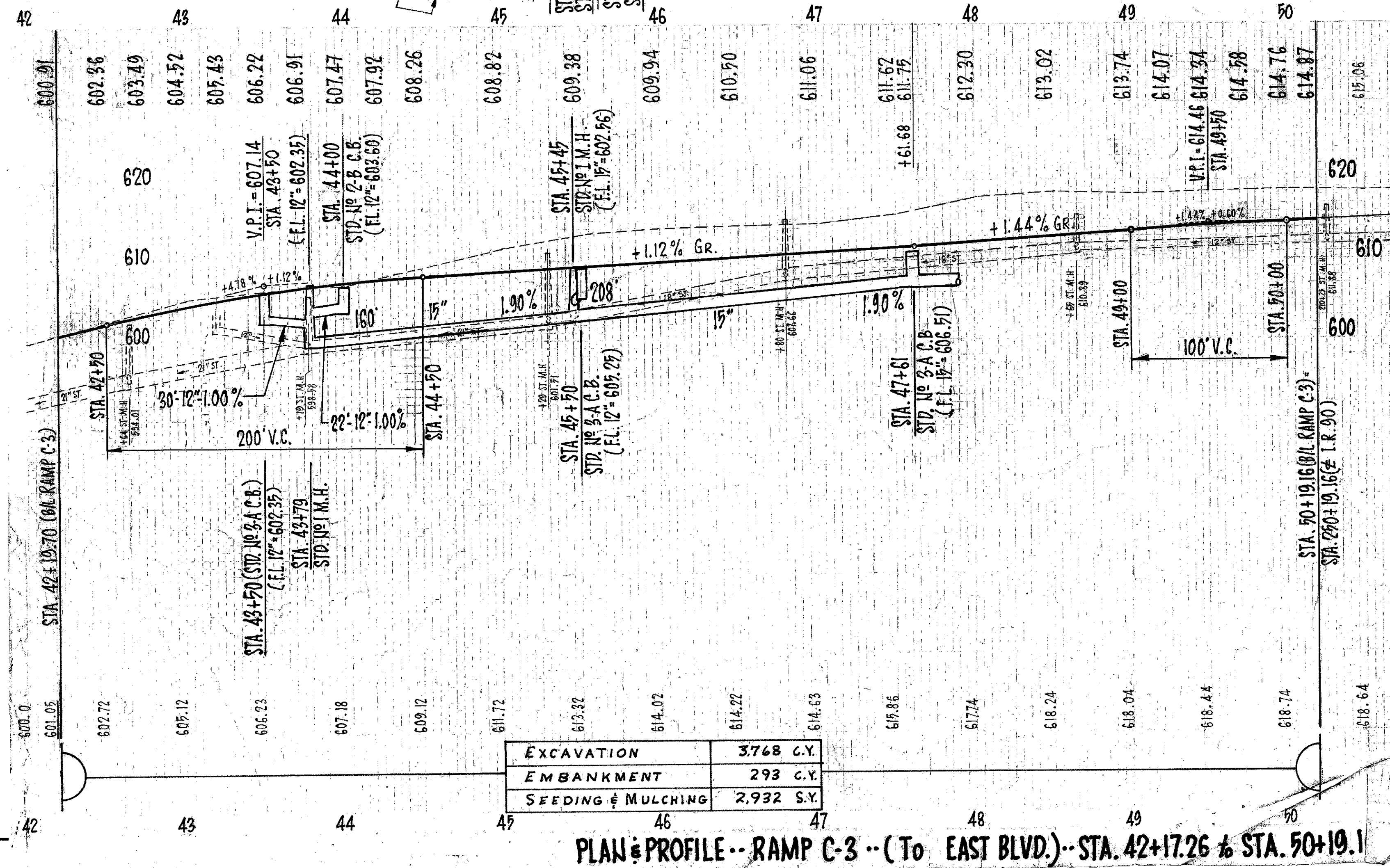
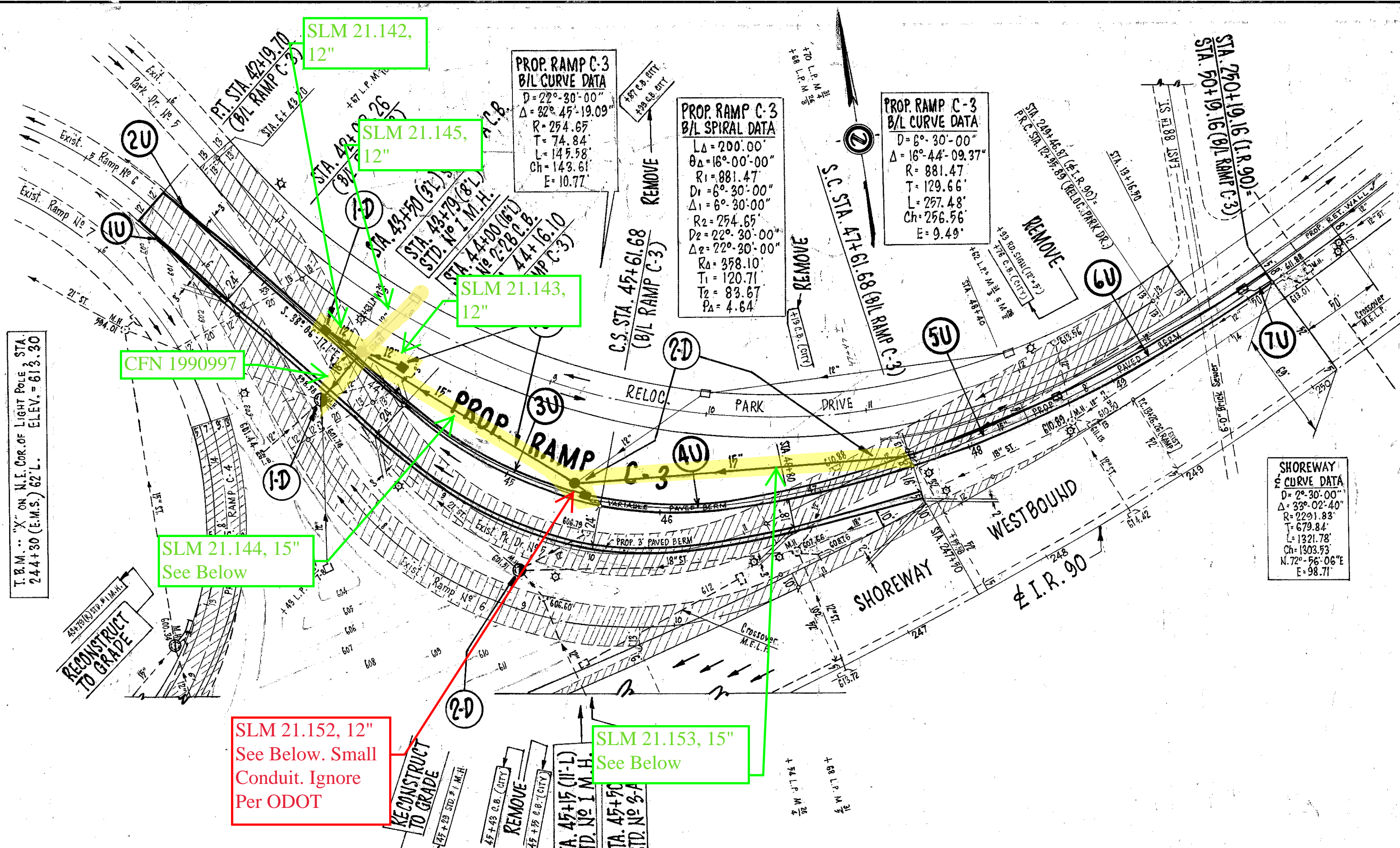


DRAINAGE					
REF. NO.	STATION	SIDE	ITEM 604		ITEM 603
			STD. NO. 2-A-6 INLET	MANHOLE 3-A ADJUST TO GRADE	12" CONDUIT TYPE C CLASS B BEDDING
ID	FROM TO	L/R	EACH		LIN. FT.
			1	1	
2D	RAMP C-2 RAMP C-4	L/R	1	1	24
2D	RAMP C-2 RAMP C-4	L/R	1	1	16
TOTALS					24

CUY-90-17.58 Sheet 40

CUYAHOGA COUNTY
CUY-90-17.58

COMPUTED BY: A. D. H. H. H.
CHECKED BY: W. R. H. H. H.



DRAINAGE											
REF. NO.	STATION		SIDE	ITEM 604				ITEM 603			
				STD. NO. 3-A	STD. NO. 2-2B	STD. NO. 1	MANHOLE RECONSTR.	12" CONDUIT TYPE B CLASS B BEDDING	12" CONDUIT TYPE C CLASS B BEDDING	15" CONDUIT TYPE C CLASS B BEDDING	18" CONDUIT TYPE B CLASS B BEDDING
	FROM	TO		EACH	EACH	EACH	EACH	LIN. FT.			
1D	RAMP C-3	RAMP C-3	L&R	1	1	1	1	30	22	160	40
2D	RAMP C-3	RAMP C-3	L&R	1	1	1	1	48	6	208	
3D	PARK DRIVE	PARK DRIVE	L&R	1				100	192		
4D	RAMP C-3	PARK DRIVE	L&R	2							
TOTAL				5	1	2	2	178	220	368	40

EXCAVATION	9.117 C.Y.
EMBANKMENT	88 C.Y.
SEEDING & MULCHING	3.358 S.Y.

PLAN & PROFILE -- RAMP C-3 -- (To EAST BLVD.) -- STA. 42+17.26 to STA. 50+19.1

PLAN & PROFILE -- RELOC. PARK DR. (E of EAST BLVD.) -- STA. 6+43.50 to STA. 13+16.5